

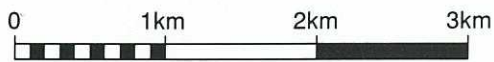
Out of Control

WARA Winter 24 Hour Rogaine. June 21 & 22 1997

Incorporating the Big Country Camping and Tramping
6 Hour Schools Championships

LEGEND

SCALE 1:50,000, 5 meter contour interval



- Building
- Control
- Contours
- Dam
- Forest Boundary
- Hash House
- Magnetic North Line
- Out of Bounds
- Road - Sealed
- Gravel
- Swamp
- Track
- Track Continuation
- Watercourse
- Water Drop

SETTERS AND VETTERS

Dianne Challen Ian Thomsett
Gary Carroll John Tonai-Moore

ACKNOWLEDGEMENTS

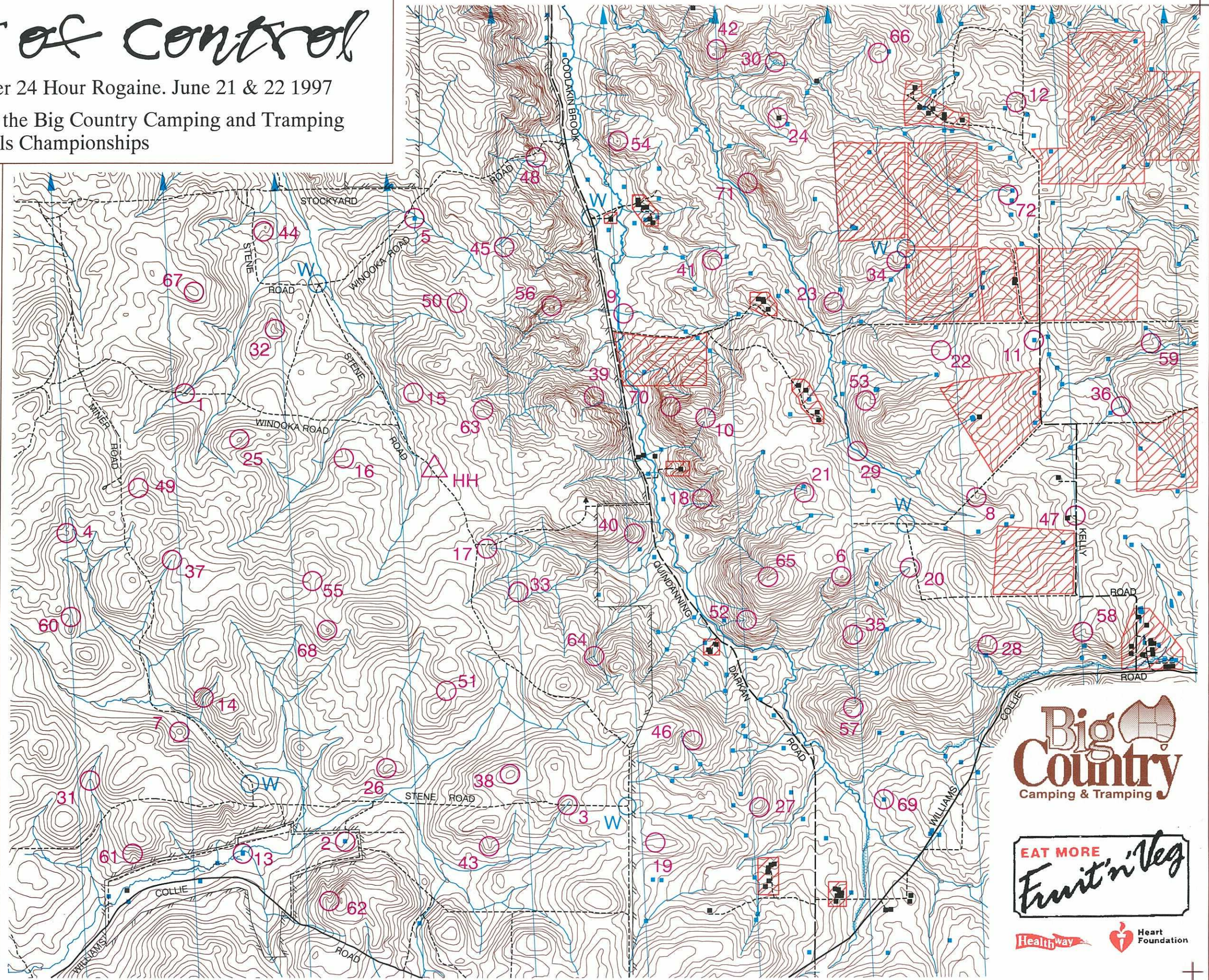
Thanks to CALM, Water and Rivers Commission and Bunnings Tree Farms for allowing access.

Special thanks to the farmers and their families:

Max Cameron
Max and Margaret Cowcher
Ken and Glenys Curteis
Tim and Chris Higham
Lance and Debbie Kemp (Lynford Farm)
Phil Morgan and Carmel Davis
Jim Stockton
John and Marlene Waldock
Ernie and Joan Waldock

Possession of this map does not give right of entry to this area.

This map was produced using OCAD. Data supplied by DOLA and used under copy licence 393/93



Out of Control 24 Hour Rogaine, June 21st and 22nd 1997

No.	Description	Points	No.	Description	Points	Important information	
1	The track and watercourse junction	10	37	The gully, upper part	50	Control Cards From 1130 Sat.	
2	The dam, north west side	10	38	The knoll	50		
3	The track and watercourse junction	10	39	The gully, head of	50		
4	A knoll	10	40	The spur	50		
5	The dam, south west side	10	41	The spur	50		Briefing
6	The knoll	10	42	The gully, upper part	50		1145 Sat.
7	The knoll	10					
8	The spur	10	43	The spur, top of	60		Start
9	The eastern creek and a fence junction	10	44	The gully	60		1200 Sat.
10	The saddle	10	45	A saddle	60		
11	The dam, north side	10	46	The spur	60		Finish
12	The gully	10	47	The road and track junction. <i>"International Airport"</i>	60		24 hours later
			48	A boulder cluster	60	Hash House	
13	The dam, north east side	20	49	A saddle	70	Open 1600 Sat.	
14	The gully	20	50	The spur	70	Closed 1300 Sun.	
15	The broad gully	20	51	The saddle	70	Fruit Drops from 1600 Sat.	
16	The gully	20	52	The gully, upper part	70		
17	The gully, head of	20	53	The spur, top of	70		
18	On the <i>"sheep poo"</i> spur	20	54	The knoll, <i>"Hanging Rock"</i>	70		
19	The knoll, west side, on a vegetation boundary	20				Astronomical Sunset Saturday 1714 Sunrise Sunday 0717 Moonrise Saturday 1801 Moonset Sunday 0811	
20	The gully, head of	20	55	A saddle	80		
21	A boulder cluster	20	56	The knoll	80		
22	The saddle, western part	20	57	The gully, head of	80		
23	A boulder cluster, north side of the knoll	20	58	The gully, on a dead tree	80		
24	The derelict shed	20	59	The small rocky spur	80		
			60	The saddle	80		
25	The knoll	30	61	The shallow gully (<i>Eagle Gully</i>)	90		
26	The knoll	30	62	Head of a watercourse	90		
27	The knoll, south east side, on a power pole	30	63	The small rocky spur	90	Controls Used 72	
28	The rocky spur	30	64	The watercourse junction	90		
29	The watercourse and a fence junction, south side	30	65	The summit, north west side, on a breakaway	90	Total Points 3480	
30	A creek bend	30	66	The rocky spur, top of	90		
31	The broad gully	40	67	The knoll, eastern part	100		
32	The knoll	40	68	The knoll	100		
33	The spur, top of	40	69	A clump of trees, 50m north of the dam	100		
34	The rocky spur, top of	40	70	The spur (<i>Great view!</i>)	100		
35	A 1.5 m boulder cluster, upper part of the gully	40	71	A 5m cliff, the base of. <i>Be Careful!</i>	100		
36	The watercourse junction	40	72	A water trough	100		